

MOUNT WEEKLY

THEMOUNTMKE.COM

IN WORSHIP TODAY

Our God speaks to us. God’s shepherds speak to us on his behalf and pray for us. Today, we focus on God’s Word through the brother of Jesus, Jude. He prays that God would keep us in his love.

FREE GIFT

If you are a first-time guest with us today, we have a gift for you. **Please stop by the Welcome Table with your Connection Card.** We’d love to share this gift with you.

NEXT STEPS

If you’re new with us today or would like a refresher study of the Bible’s teachings, you’re invited to take this next step. Learn more about God’s ways through Christian Essentials. Ask Pastor Bourman for more information or sign-up here:

https://bit.ly/CE_Interest

WEEK AT A GLANCE

Tuesday, January 23

10 am – Connect Group

7 pm – Women’s Connect Group

Thursday, January 25

8 pm – Connect Group (Zoom)

Saturday, January 27

10 am - Food Pantry

Sunday, January 28

9:30 am –Worship Service with Communion

11 am – Voters Meeting

MARK YOUR CALENDAR

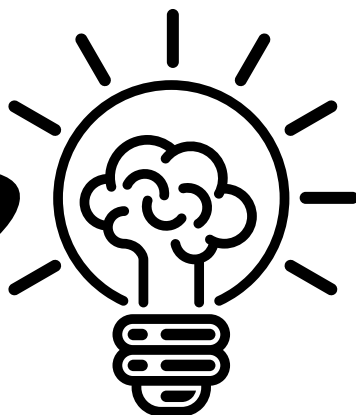
Regular Voter’s Meeting:

January 28 after worship

Ash Wednesday

February 14 at 6 pm

DID YOU KNOW?



Do you know how we use your offerings? Each dollar given is used in these ways.

Mount Lebanon Ministry



■ Personnel ■ Admin Expense ■ Ministry Expense ■ Missions ■ Building Operations

INTERESTING FACT

RALLY THE FAMILY

This sermon series that we're in the middle of right now is about more than raising money for our roof, tuckpointing, and mortgage. This is about talking together about where we are and where we want to be. It's about learning from each other and about each other. It's about learning about this ministry and its needs. It's about learning about what each of us can do to support and drive this ministry forward. This is about learning from our God about the lives he calls us to live in this world.

This is YOUR ministry. This is OUR ministry. Let's rally around his mission here. Let's commit ourselves to him and his Word. Let's commit ourselves to his mission. Let's rally the family around the Word of God and his Sacraments and see what God will do among us.



CAN YOU HELP?

On December 17, a number of souls were adopted into God's family through Baptism. We made a promise that day to do all that we could to support and encourage them in their faith.

One of the things we like to do is hand-deliver a baptismal certificate, a framed picture, and an invitation to Christian Essentials. **Can you help?** If you would like to help with this effort, please talk to Pastor Bourman.

MINISTRY UPDATES

Join us for a...

Stargazing Soiree

benefitting

Mount Lebanon Lutheran School

Saturday, February 10, 2024 at 5:30pm
The Bavarian Bierhaus
700 W Lexington Blvd, Glendale, WI

Cocktails & Hors d'oeuvres
Silent & Live Auction
Formal Dinner & Program
Afterglow

\$125 per plate or \$1000 per 8-top table

For more information, or if you would like to sponsor, donate an item, or volunteer your time, please call Jeff Matteson at (734) 255-6215.

FOR YOUR PRAYERS

For the family of Karen Vogel, a friend of **Brenda Joers**, who recently lost her sister.

For **David DeLay**, the nephew of Karen Runge, who is in prison.

For **Pastor Krueger**, Heather, Amos, and Maxwell as they make their transition to a new home and ministry in Idaho.